



Fully Automatic
Blood Cell Counter
Dual Chamber



* Terms & Conditions Apply

HEMA 3210

- Low Consumption reagent · 3-part differential hematology analyzer : 18 parameters + 3 histograms
- 2 counting modes : whole blood pre diluted · Broad range voltage : 85-250V

Analytical Technologies Limited
www.analyticalgroup.net

HEMA 3210

General Technical Specifications

Parameters

WBC, LYM, MO, GRA, LYM%, MO%, GRA%, HGB, HCT, MCV, MCH, MCHC, RDW, PLT, MPV, PDW, PCT

Measurement Principle

Counting method : Electric impedance
Hemoglobin : SFT optical detection

Sample Volume

10 μ L (Prediluted) / 20 μ L (Whole blood)

Aperture Diameter

WBC : 100 μ m
RBC : 80 μ m

Throughput

60 samples/hour

Reagent consumption by test

Lyse 0.3mL
Diluent 25mL

Printer

Built in thermal recorder, 58mm wide paper,
External printer optional

Output

RS-232, 1 Parallel printer, Power Supply

Software

Windows 98

Display

Touch Sensitive LCD Display (STN-LCD)

Operating Environment

Temperature 10 $^{\circ}$ C~35 $^{\circ}$ C
Humidity 30%~80%
Power AC220V/110V \pm 10%, 50/60Hz, 150VA

Dimension

330mm (W) x 380mm (D) x 449mm (H)

Weight

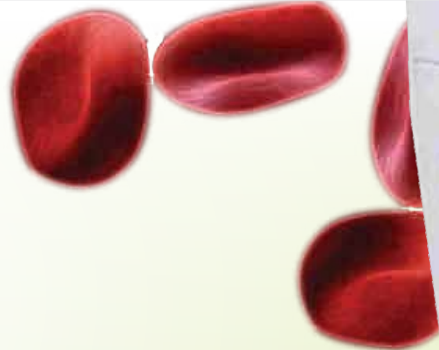
20.0 Kg

Performance

Parameter	Precision (CV%)	Linearity Range
WBC	<3.0%	0.0~99.9(10 ³ / μ L)
RBC	<2.0%	0.00~99.9(10 ⁴ / μ L)
HGB	<1.5%	0.0~30.0(g/dL)
HCT	<2.0%	
MCV	<1.5%	
MCH	<2.0%	

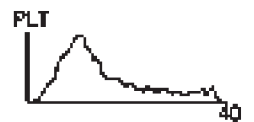
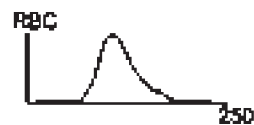
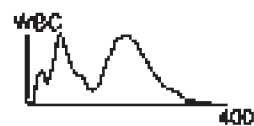


Fully



Report
No. 00008
2008/11/07 09:35

WBC	5.5 X 10 ³ /L
LY	- 1.2 X 10 ³ /L
MO	0.2 X 10 ³ /L
GR	4.1 X 10 ³ /L
LY%	- 21.8%
MO%	- 3.6%
GR%	+ 74.6%
RBC	4.05 X 10 ⁶ /L
HGB	135 g/L
HCT	0.454 L/L
MCV	+ 112.0 fL
MCH	33.3 pg
MCHC	- 279 g/L
RDW	+ 18.6%
PLT	148 X 10 ³ /L
PCT	1.34mL/L
MPV	9.1 fL
PDW	+ 18.0%



Automatic Blood Cell Counter - Dual Chamber

▶▶▶ About Analytical Technologies

Analytical Technologies is the Fastest Growing Global Brand having presence in at least 96 countries across the globe. Analytical Technologies Limited is an ISO : 9001 Certified Company engaged in Designing, Manufacturing, Marketing & Providing Services for the Analytical, Chromatography, Spectroscopy, Bio Technology, Bio Medical, Clinical Diagnostics, Material Science & General Laboratory Instrumentation. Analytical Technologies, India has across the Country operations with at least 4 Regional Offices, 6 Branch Offices & Service Centers.

▶▶▶ Our Products And Technologies



Bio LC / Intelligent HPLC / UFLC / UPLC / nanoLC™



HEMA 2062 Fully-automatic Hematology Analyzer



NOVA 2200 Plus Auto Chemistry Analyzer



URINOVA 2800 Urine Analyzer



Fully Automated CLIA



Micro Plate Reader / Washer



MRI CT Scanner



NOVALYTE 2200 Electrolyte Analyzer



NOVA Basic Semi - Auto Chemistry Analyzer



Kidney Stone Analyzer



Amino Acid Analyzer



PCR/Gradient PCR/RT PCR



5 part Hematology Analyzer



Blood Gas Analyzer



Portable POC Blood gas Analyser



Random access analyzer for immunoassay, proteins & clinical chemistry



Revolutionary automation in neonatal screening



SPECTRO 2092



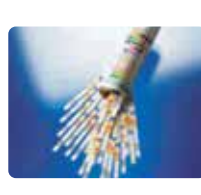
Semen Analyzer



Water Purification System



Bio Chemistry Reagents



Urine Strips



Rapid Diagnostic kits



Hematology Reagents



Analytical®
Technologies Limited

Analytical Group Companies
Analytical Technologies Limited
Analytical Bio-Technologies
Analytical Bio- Med
HPLC Solutions

Branch Office / Distributor

Corporate & Regd. Office :

Analytical House, # E67 & E68. Ravi Park, Opp., Sainath Park, Vasna Road, Baroda, Gujarat - 390015 INDIA.
Tele : 0265-2253620 / 2252839 Fax : 0265-2254395 E-mail : info@hplctechnologies.com/info@ais-india.com
Web : www.ais-india.com / www.analyticalgroup.net